



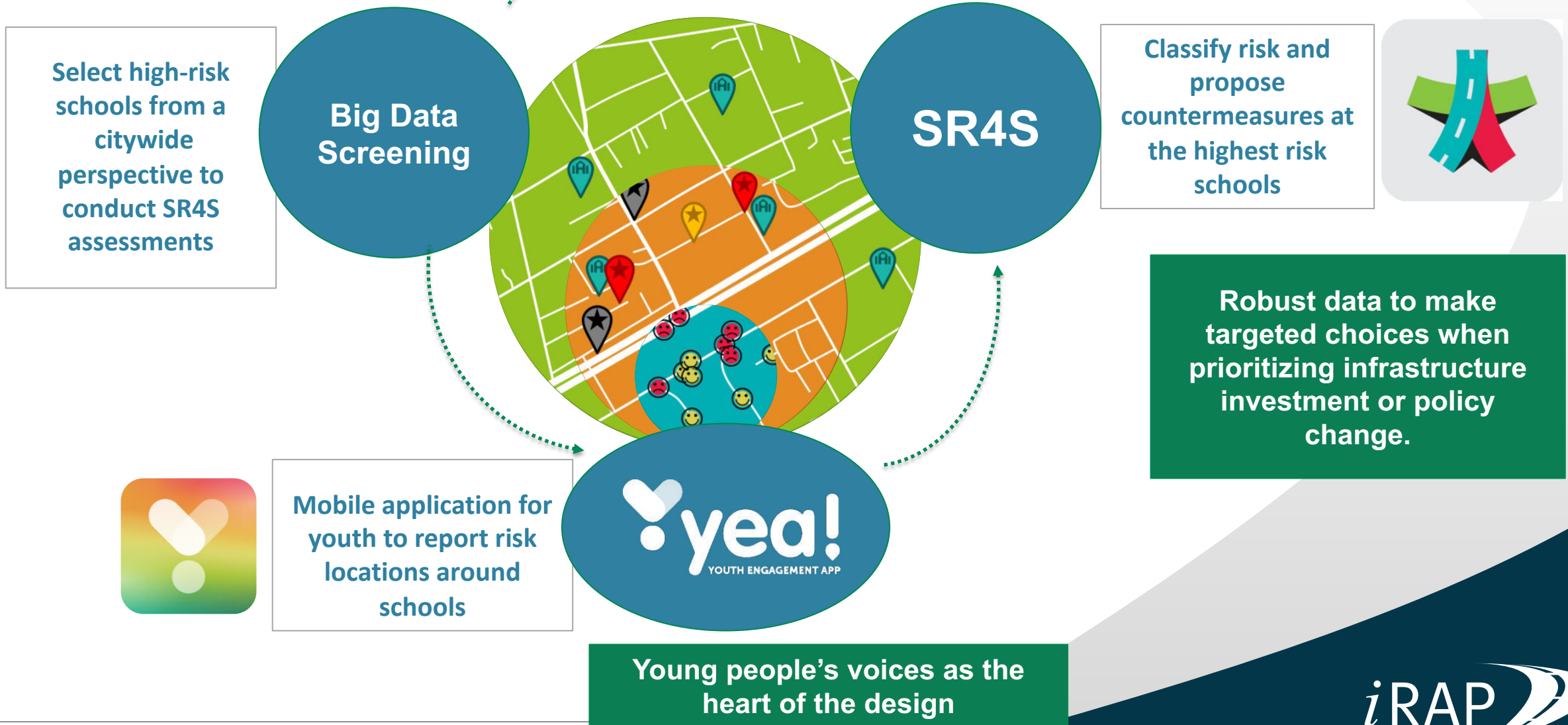
 **yea!**
YOUTH ENGAGEMENT APP



Updates in the pedestrian model



Vietnam Pilot Project



What is the YEA?

Technological solution to collect students' perceptions on road safety.

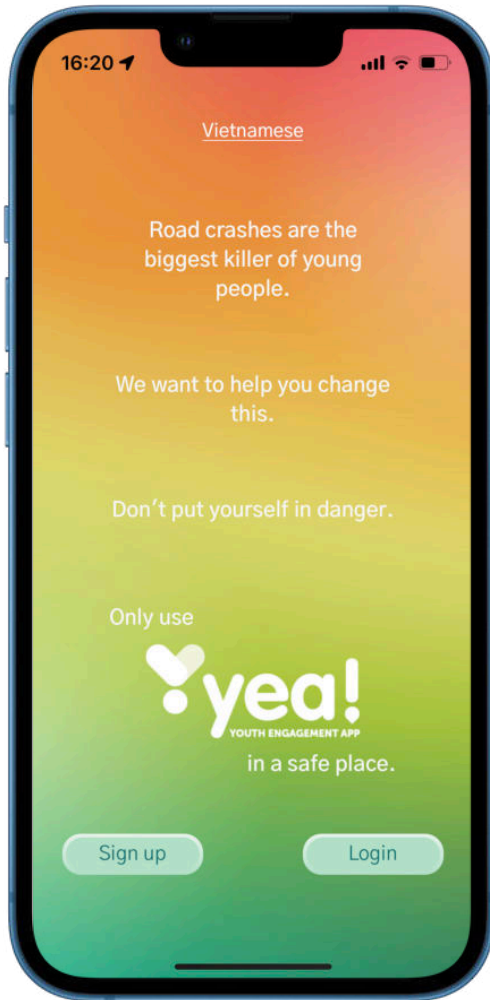
Mobile application that can be used when travelling or in school/home.

Developments goals:

- To enable youth to communicate their fears and recommendations to people who can solve them.
- To record where they feel unsafe on roads, becoming road safety a common/casual conversation with peers

Output goals

- To support SR4S assessments





MADE SAFER BY *i*RAP

SR4S model review



Feedback from partners assessing more than 1,000 schools

Developments goals:

- Alignment with safe system principles.
- Compatibility with other user risk factors (1-star for vehicles – 1-star for pedestrians)
- Reflect new evidences on speed risk
- 3-star or better as Global Plan

Part of the broader review of iRAP models



STAR RATING
FOR SCHOOLS

uses iRAP's Pedestrian Model



Examples

Old model ★★ ★

New model ★★

At school entrance > Karve road, off nal stop



Items Recorded

Land Use Left	Land Use Right	Area Type	Vehicle Parking	Sight Distance	Number of Lanes	Lane Width	Shoulder Rumble	Road Condition
Grip	Grade	Undivided Carriageway Type	Middle of Road	Lines & Signs	Street Lighting	School Warning	Crossing Supervisor	Sidewalk Left
Sidewalk Right	Road Edge Left	Road Edge Right	NOT PRESENT Pedestrian Fencing	Crossing Main Road	Crossing Side Road	NA Crossing Quality	2800 Vehicles / Day	0 Crossing Flow / Hr
101-200 Right Side Flow / Hr	201-300 Left Side Flow / Hr	Intersection Type	NA Driveways	NA Intersection Side Flow	NA Intersection Quality	NOT PRESENT Intersection Channelisation	Curve Type	
NA Curve Quality	30 km/h Speed Limit	30 km/h Operating Speed	NOT PRESENT Speed Management					

3 stars or better: < 30km/h where vehicles and pedestrians mix

Examples

Old model ★ ★ ★ ★ ★

New model ★ ★ ★

Aliam Drive > Intersection with Bangiso Drive

★★★★★★

School: Ummangaliso Primary School Star Rated

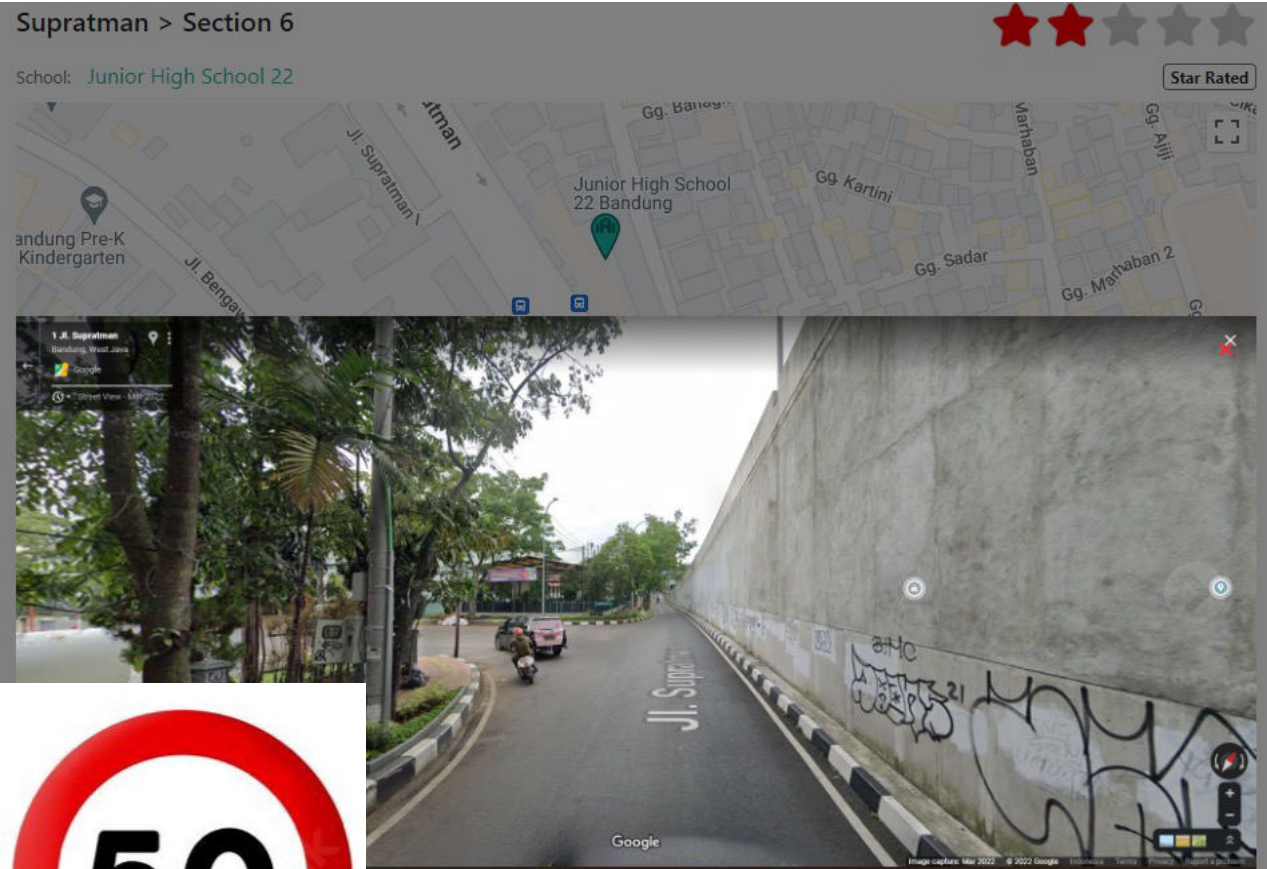
Items Recorded

Land Use Left	Land Use Right	Area Type	Vehicle Parking	Sight Distance	1&1	WIDE	NOT PRESENT	GOOD
MEDIUM	Grade	Undivided	Middle of Road	POOR	PRESENT	School Warning	STOP	Sidewalk Left
Sidewalk Right	Road Edge Left	Road Edge Right	NOT PRESENT	Crossing Main Road	Crossing Side Road	NA	800	51-100
51-100	51-100	Intersection Type	Driveways	100-1k	POOR	NOT PRESENT	Curve Type	
POOR	40 km/h	30 km/h	PRESENT					

No crossings or sidewalks > 30km/h = no 5 stars

Examples

Old model ★★
New model ★



Items Recorded

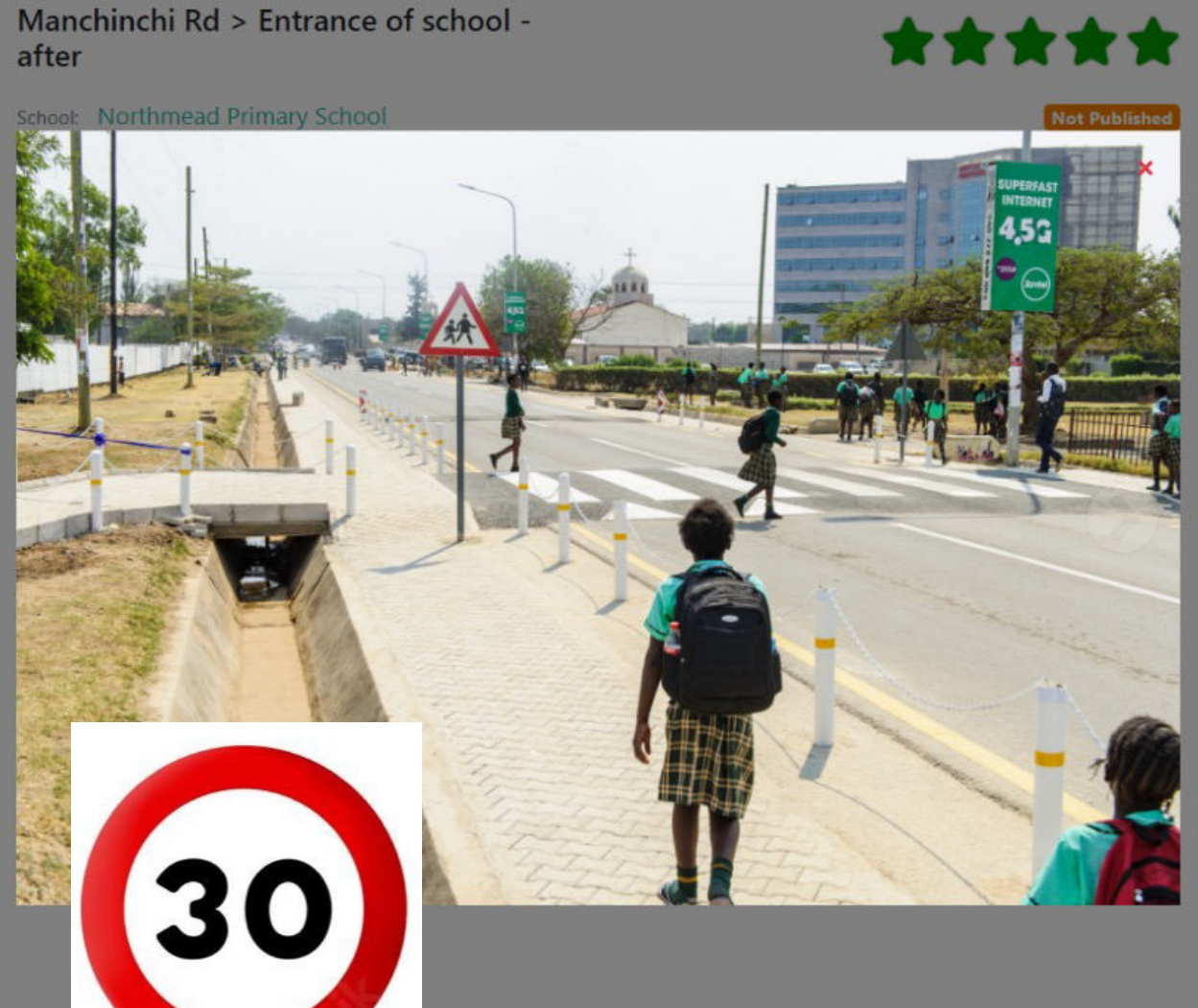
Land Use Left	Land Use Right	Area Type	Vehicle Parking	Sight Distance	Number of Lanes	Lane Width	Shoulder Rumble	Road Condition	Grip	Grade
Undivided	Middle of Road	Lines & Signs	Street Lighting	School Warning	Crossing Supervisor	Sidewalk Left	Sidewalk Right	Road Edge Left	Road Edge Right	Pedestrian Fencing
Crossing Main Road	Crossing Side Road	Crossing Quality	Vehicles / Day	Crossing Flow / Hr	Right Side Flow / Hr	Left Side Flow / Hr	Intersection Type	Driveways	Intersection Side Flow	
Intersection Quality	Intersection Channelisation	Curve Type	Curve Quality	Speed Limit	Operating Speed	Speed Management				

3-Star roads without pedestrian facilities should not be 40km/h or above

Examples

Old model ★★★★★

New model ★★★★★



Items Recorded

Land Use Left	Land Use Right	Area Type	Vehicle Parking	Sight Distance	Number of Lanes	Lane Width	Shoulder Rumble	Road Condition
Grip	Grade	Carriageway Type	Middle of Road	Lines & Signs	Street Lighting	School Warning	Crossing Supervisor	Sidewalk Left
Sidewalk Right	Road Edge Left	Road Edge Right	Pedestrian Fencing	Crossing Main Road	Crossing Side Road	Crossing Quality	Vehicles / Day	Crossing Flow / Hr
Right Side Flow / Hr	Left Side Flow / Hr	Intersection Type	Driveways	Intersection Side Flow	Intersection Quality	Intersection Channelisation	Curve Type	
Curve Quality	Speed Limit	Operating Speed	Speed Management					

Decimal star ratings



Scale of star rating within the same band



Thank you!

SHANNA LUCCHESI
Project Coordinator
IRAP

